



# Electromechanical Switch Replacement

---

---

## Optical Pyrometer

---

---

*Author: Spehro Pefhany  
Barclay Instruments Inc.  
Burlington, Ontario, Canada  
email: speff@interlog.com*

### APPLICATION OPERATION

An optical pyrometer is a device that allows non-contact measurement of temperature in the range from less than 1000° F to more than 3000° F. It operates on the principle of comparing a hot filament against a background of the object to be measured using a simple optical system similar to half of a binocular.

Normally, these devices use no electronics at all, they consist of a power rheostat, an analog meter calibrated to read temperature and on/off switch. As portability is normally a requirement, a battery source such as alkaline 'C' or 'D' cells is used to power the device.

Incorporating a PIC12C5XX into an optical pyrometer has the following benefits:

- Improved battery life from using a PWM MOSFET to control power to the filament, thus saving typically half the energy consumed.
- Elimination of the power-wasting rheostat with two inexpensive momentary pushbuttons.
- Elimination of the on/off switch.
- Automatic power-off, thus saving the batteries should the user accidentally leave the filament on.

Only four external components are required to implement the above functions, including the momentary switches. The internal RC clock and reset circuitry of the PIC12C5XX are more than adequate for this application. The internal pull-ups on inputs and the wake-up on pin change functions are extremely useful in this application.

### Functions

Pressing either the up or down key will "wake up" the PICmicro™ MCU and turn the unit on. The power to the filament is retained from the last measurement. The power can be adjusted up or down by holding down the appropriate key. Pressing both keys at once for more than a certain amount of time (0.8 second) will turn the unit off when the keys are released. If no keys are pressed for more than a certain amount of time (2.5 minutes), the unit will turn itself off. Power draw in the "off" condition is negligible compared to battery internal self-discharge leakage.

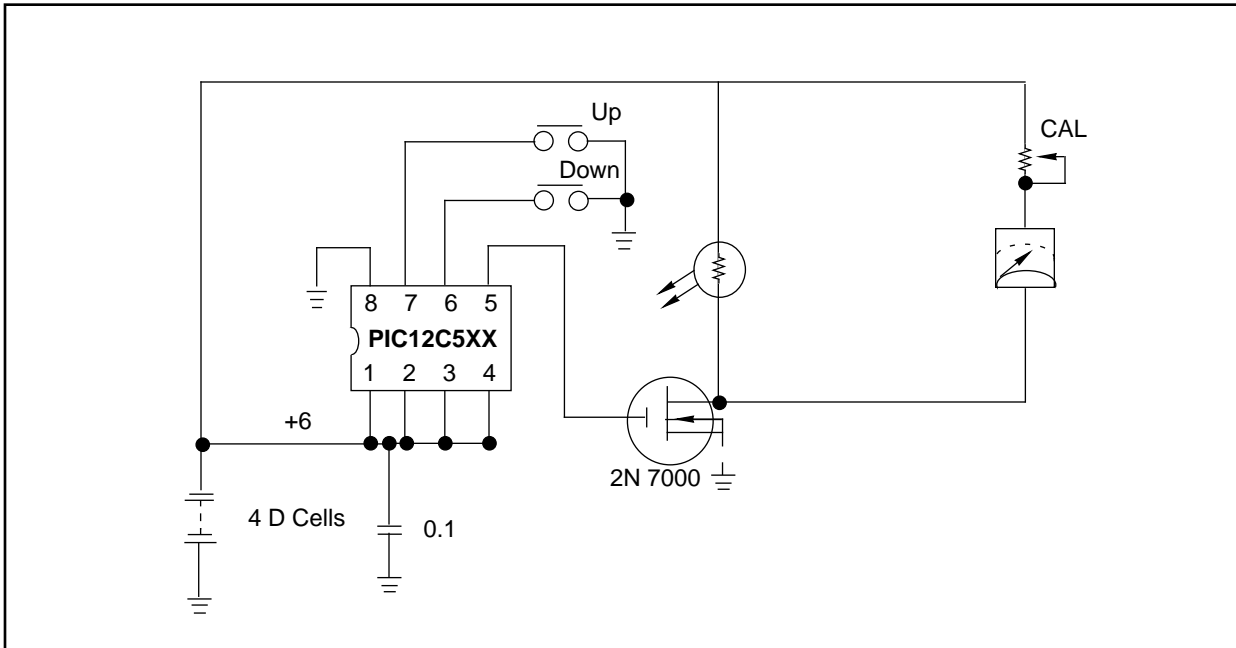
---

Microchip Technology Incorporated, has been granted a nonexclusive, worldwide license to reproduce, publish and distribute all submitted materials, in either original or edited form. The author has affirmed that this work is an original, unpublished work and that he/she owns all rights to such work. All property rights, such as patents, copyrights and trademarks remain with author.

# Electromechanical Switch Replacement

## GRAPHICAL HARDWARE PRESENTATION

The hardware used is shown below. No supply regulation is used since the PICmicro will operate over a wide range of supply voltage and the analog meter reads the actual average voltage on the filament. The weak pullup on GP3 also serves GP4 and GP5.



## MICROCHIP TOOLS USED

### Development Tools:

PISTART® Plus

### Assembler/Compiler Version:

MPLAB 3.22, MPASM 1.5

# Electromechanical Switch Replacement

## APPENDIX A: SOURCE CODE

```
*****
;
; This program is for a PIC2C5XX microcontroller that will control a simple
; optical pyrometer using PWM and providing timed auto-off and on/off
; functions.
;
; (C) 1997 Spehro Pefhany, all rights reserved
;
; Rev. A
;
; - verified current in "off" state is less than 1uA
; - 15.544 msec execution for bigloop in simulator
;
*****
listp=12c509, r=HEX
include <P12C509.INC>; sfr definitions

#definePOWER_TIME0x26; desired time in seconds, divided by 3.96 (2.5min)
#define BOTHKEY_TIME0x1F; desired time in seconds, divided by 0.01554 (0.5 sec)

ctr equ 09 ; counter generates time ramp for comparison
c_valequ0A ; current value of PWM from 0..FF
repeatsequ0B; number of times to repeat the PWM loop
pwr_preequ0C; power off prescaler
pwr_ctrequ0D; power off counter
bothky_ctrequ0E; timer for both keys pressed to power off

org 0

coldstart:
;*****
; Setup options
;*****
movwfOSCCAL; may as well use calibrated time
movlwH'00'

btfss7,STATUS; if a wake up , don't reset the set value
movwfc_val

movwfSTATUS; make sure that the page bit is cleared, of course it
; is supposed to be

movlwH'FB'; only GP2 is an output, other are inputs
trisGPIO; do it

movlwH'00'; set up for weak pullups and wake up on pin change
option
;*****
; Now set up the power off timer to full time
;*****
movlwH'FF'
movwfpwr_pre; set up prescaler
movlwPOWER_TIME
movwfpwr_ctr; set up counter
;*****
; And the bothky timer
;*****
movlwBOTHKEY_TIME
movwfbothky_ctr; set up counter
;*****
; The central PWM loop for controlling the filament intensity
;
; We only check for zero outside the tight inner loops
```

# Electromechanical Switch Replacement

---

```
;*****
bigloop:
    movlwD'20'; number of times to repeat
    movwf repeats
    movfc_val,w; get the current value
    btfsc STATUS,2; skip if not zero
    goto iszero
replloop:
;*****
; Inner PWM loop.. if c_val is 0, don't even start
;
; The below gives exactly the same time to completion, regardless of
; on and off times, with some overhead where the output is off-- except
; for 0 input, must simulate that.
;*****
    movfc_val,w; do it again for the loop
    movwfctr
    bsfGPIO,2; turn the output on
onloop:
    decfszctr,f
    goto onloop
    bcfGPIO,2; turn the output off

    comfc_val,w; get complement of current value
    movwfctr
    incfctr,f; add 1 to it
offloop:
    decfszctr,f
    goto offloop
    decfsz repeats,f
    goto replloop; repeat multiple times
    goto continue
;*****
; Here we handle the special case of a zero c_val
;
; We even the time out exactly, even though it isn't critical in this case
;*****
iszero:
replloop1:
    bcfGPIO,2; just to be sure

    movlwH'00'; counter
    movwfctr
offloop1:
    decfszctr,f
    goto offloop1
    nop          ; even out the delay to make it exactly the
                ; same as the controlled on/off time loops

    nop
    nop          ; even it out exactly
    decfsz repeats,f
    goto replloop1; repeat multiple times
    nop          ; even time out exactly
continue:
;*****
; The "extra" delay loop for limiting the maximum light intensity
; with new batteries
;*****
; code goes in here, if required
;*****
; Now poll keys, check for time-out of power-off timer and
; do any key operations required.
;*****
    btfssGPIO,0; skip if no up key
    goto upkeyp
    btfssGPIO,1; skip if no down key
```

# Electromechanical Switch Replacement

---

```
gotodownkeyp
;*****
; Check to see if we are in timeout situation on bothkey timer
;*****
movfbothky_ctr,f
btfscSTATUS,2; if not timed out, then continue
gotosnooze
;*****
; Reset the timer
;*****
movlwBOTHKEY_TIME
movwfbthky_ctr; reset the timer for both keys pressed

;*****
; There are no keys pressed, so count the power-off timer down and
; delay so it is the same as the other paths
;
; We hit this roughly every 16ms.. power off delay should be 2-3 minutes,
; so we need a count of 9,400 to get 2.5 minutes, a divide by 255 will
; give roughly 4 second per secondary count.
;
;*****
decfszpw_r_pre; count down prescaler
gotoback
gotodeccount
back:nop
nop
nop
nop
gotobigloop
deccount:
nop ; keep time same as other cycles
decfszpw_r_ctr,f; count down main counter
gotobigloop
;*****
; Now we have the power-off timer timeout, so we put the micro to
; sleep. It will wake upon a pin change.
;*****
snooze:
bcfGPIO,2 ; just to be sure
movfGPIO,w; read all pins, as manual recommends
sleep ; goes to reset on wake-up
;*****
; upkeyp handles an up key
;*****
upkeyp:btfssGPIO,1; this keeps time same as downkeyp as well
gotobothkeyp
comfc_val,w; see if it was FF
btfscSTATUS,2; skip if it wasn't FF
decfc_val,f
incfc_val,f
gotocommon1

;*****
; downkeyp handles a down key
;*****
downkeyp:
movfc_val,w; see if it is zero
btfscSTATUS,2; skip if it wasn't zero
incfc_val,f
decfc_val,f
gotocommon1

;*****
; bothkeyp handles situation where both keys are pressed
;
```

# Electromechanical Switch Replacement

---

```
;*****
bothkeyp:
  movfbothky_ctr,w; check if already zero
  btfssSTATUS,2
  decfbothky_ctr,f; if not already zero, decrement
  nop          ; keep same time as others
  gotocommon
;*****
; Common ending for upkeyp and downkeyp and bothkeyp
;*****
common1:nop; keep all the times the same
common:
;*****
; Set up the power off timer to full time again
;*****
  movlwH'FF'
  movwfpwr_pre; set up prescaler
  movlwPOWER_TIME
  movwfpwr_ctr; set up counter

  gotobigloop

end
```

# Electromechanical Switch Replacement

---

---

NOTES:



**MICROCHIP**

---

---

# WORLDWIDE SALES & SERVICE

---

---

## AMERICAS

### Corporate Office

Microchip Technology Inc.  
2355 West Chandler Blvd.  
Chandler, AZ 85224-6199  
Tel: 602-786-7200 Fax: 602-786-7277  
Technical Support: 602 786-7627  
Web: <http://www.microchip.com>

### Atlanta

Microchip Technology Inc.  
500 Sugar Mill Road, Suite 200B  
Atlanta, GA 30350  
Tel: 770-640-0034 Fax: 770-640-0307

### Boston

Microchip Technology Inc.  
5 Mount Royal Avenue  
Marlborough, MA 01752  
Tel: 508-480-9990 Fax: 508-480-8575

### Chicago

Microchip Technology Inc.  
333 Pierce Road, Suite 180  
Itasca, IL 60143  
Tel: 630-285-0071 Fax: 630-285-0075

### Dallas

Microchip Technology Inc.  
14651 Dallas Parkway, Suite 816  
Dallas, TX 75240-8809  
Tel: 972-991-7177 Fax: 972-991-8588

### Dayton

Microchip Technology Inc.  
Two Prestige Place, Suite 150  
Miamisburg, OH 45342  
Tel: 937-291-1654 Fax: 937-291-9175

### Los Angeles

Microchip Technology Inc.  
18201 Von Karman, Suite 1090  
Irvine, CA 92612  
Tel: 714-263-1888 Fax: 714-263-1338

### New York

Microchip Technology Inc.  
150 Motor Parkway, Suite 416  
Hauppauge, NY 11788  
Tel: 516-273-5305 Fax: 516-273-5335

### San Jose

Microchip Technology Inc.  
2107 North First Street, Suite 590  
San Jose, CA 95131  
Tel: 408-436-7950 Fax: 408-436-7955

### Toronto

Microchip Technology Inc.  
5925 Airport Road, Suite 200  
Mississauga, Ontario L4V 1W1, Canada  
Tel: 905-405-6279 Fax: 905-405-6253

## ASIA/PACIFIC

### Hong Kong

Microchip Asia Pacific  
RM 3801B, Tower Two  
Metroplaza  
223 Hing Fong Road  
Kwai Fong, N.T., Hong Kong  
Tel: 852-2-401-1200 Fax: 852-2-401-3431

### India

Microchip Technology Inc.  
India Liaison Office  
No. 6, Legacy, Convent Road  
Bangalore 560 025, India  
Tel: 91-80-229-4036 Fax: 91-80-559-9840

### Korea

Microchip Technology Korea  
168-1, Youngbo Bldg. 3 Floor  
Samsung-Dong, Kangnam-Ku  
Seoul, Korea  
Tel: 82-2-554-7200 Fax: 82-2-558-5934

### Shanghai

Microchip Technology  
RM 406 Shanghai Golden Bridge Bldg.  
2077 Yan'an Road West, Hong Qiao District  
Shanghai, PRC 200335  
Tel: 86-21-6275-5700  
Fax: 86 21-6275-5060

### Singapore

Microchip Technology Taiwan  
Singapore Branch  
200 Middle Road  
#07-02 Prime Centre  
Singapore 188980  
Tel: 65-334-8870 Fax: 65-334-8850

### Taiwan, R.O.C

Microchip Technology Taiwan  
10F-1C 207  
Tung Hua North Road  
Taipei, Taiwan, ROC  
Tel: 886 2-717-7175 Fax: 886-2-545-0139

## EUROPE

### United Kingdom

Arizona Microchip Technology Ltd.  
Unit 6, The Courtyard  
Meadow Bank, Furlong Road  
Bourne End, Buckinghamshire SL8 5AJ  
Tel: 44-1628-851077 Fax: 44-1628-850259

### France

Arizona Microchip Technology SARL  
Zone Industrielle de la Bonde  
2 Rue du Buisson aux Fraises  
91300 Massy, France  
Tel: 33-1-69-53-63-20 Fax: 33-1-69-30-90-79

### Germany

Arizona Microchip Technology GmbH  
Gustav-Heinemann-Ring 125  
D-81739 München, Germany  
Tel: 49-89-627-144 0 Fax: 49-89-627-144-44

### Italy

Arizona Microchip Technology SRL  
Centro Direzionale Colleoni  
Palazzo Taurus 1 V. Le Colleoni 1  
20041 Agrate Brianza  
Milan, Italy  
Tel: 39-39-6899939 Fax: 39-39-6899883

## JAPAN

Microchip Technology Intl. Inc.  
Benex S-1 6F  
3-18-20, Shinyokohama  
Kohoku-Ku, Yokohama-shi  
Kanagawa 222 Japan  
Tel: 81-45-471- 6166 Fax: 81-45-471-6122

8/29/97

All rights reserved. © 1997, Microchip Technology Incorporated, USA. 9/97 Printed on recycled paper.

Information contained in this publication regarding device applications and the like is intended for suggestion only and may be superseded by updates. No representation or warranty is given and no liability is assumed by Microchip Technology Incorporated with respect to the accuracy or use of such information, or infringement of patents or other intellectual property rights arising from such use or otherwise. Use of Microchip's products as critical components in life support systems is not authorized except with express written approval by Microchip. No licenses are conveyed, implicitly or otherwise, under any intellectual property rights. The Microchip logo and name are registered trademarks of Microchip Technology Inc. in the U.S.A. and other countries. All rights reserved. All other trademarks mentioned herein are the property of their respective companies.