
Low-Cost Electric Range Control Using a Triac

*Author: Reston Condit
Microchip Technology Inc.*

INTRODUCTION

Most countertop cooking appliances like electric ranges, skillets and fryers have an adjustable mechanical thermostat to vary the heat output of the range. This solution is inexpensive, but there are several drawbacks to mechanical thermostats:

- Mechanical thermostats have to be calibrated at the factory.
- They have poor simmer performance (control is not precise at low temperatures).
- The accuracy of these devices is poor.
- Mechanical components wear out over time.

This application note will describe a low-cost microcontroller-based replacement for the mechanical thermostat which eliminates these drawbacks. The PIC10F204, Microchip's 6-pin PICmicro® microcontroller (SOT-23 package), is used to implement this solution. The PICmicro gathers user inputs from a potentiometer and controls current to the heating element via a triac. This application note will discuss triac theory, so it is also a good resource for other applications that interface to AC lines (i.e., light switches, vacuum cleaners and various other household appliances). Power to the PICmicro is supplied directly from the AC lines via a resistive power supply.

Compared to the mechanical thermostat, the PIC10F204 solution offers design flexibility, including the addition of user-friendly features. Two such features are incorporated into the PICmicro solution detailed here. These features are: (1) a status LED indicating the range is on or off, and (2) an automatic shutdown. The automatic shutdown provides added safety by shutting the range off after 2 hours if it is left unattended.

MECHANICAL THERMOSTAT OPERATION

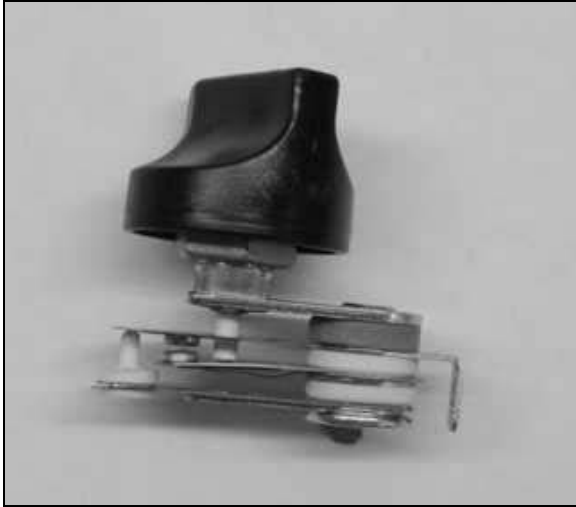
Electric ranges create heat by applying the AC line voltage across a resistive heating element. An adjustable mechanical thermostat in series with the heating element has a rotary dial which sets the amount of current to the element. The mechanical thermostat shown in Figure 1 has a complex set of metal tabs, spacers and contacts that work together to connect and disconnect power depending on the setting of the rotary dial. The following sequence of events describes the operation of a mechanical thermostat when the dial is turned halfway between off and full on.

1. Contact is made between the two terminals of the switch.
2. Resistive materials in the switch cause parts of the switch to heat and expand.
3. The expansive materials push the contact apart and the switch stops conducting current.
4. The element then cools until contact is made again.

Based on the position of the dial, the switch repeats this sequence more or less frequently. The switch allows infinite control, but without a clear reference. As a result, the switch is not very accurate. The switch is constantly subjected to thermal changes and arcing occurs frequently across the contacts when the dial is not in an absolute position (off or full on). These stresses affect the reliability of the switch.

AN958

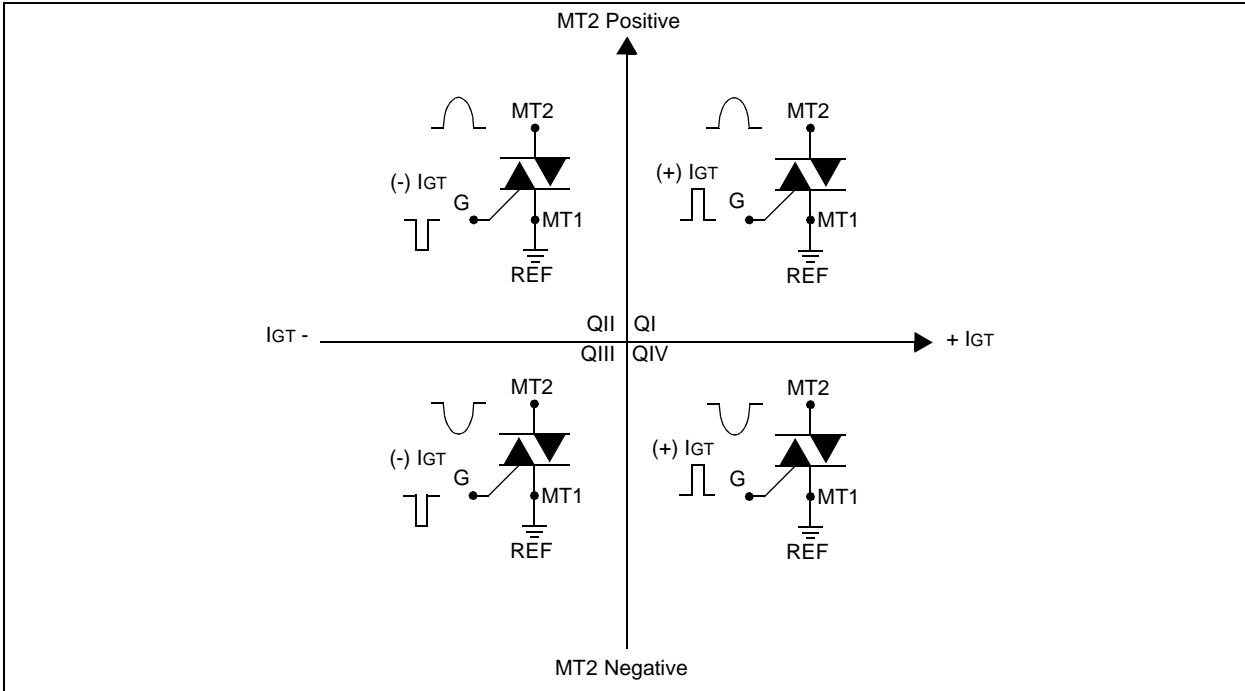
FIGURE 1: ADJUSTABLE MECHANICAL THERMOSTAT



TRIAC OPERATION

A triac will be used to control current flow to the heating element in the microcontroller-based design. A triac is a three-terminal bidirectional AC switch that is triggered by a low-energy signal applied to the gate. When this signal is applied, the triac goes from a high-impedance state to a conductive state, allowing current to flow to the load. A positive or negative gate signal will trigger a triac, though one signal is more efficient. Figure 2 shows the four trigger modes for a triac. Each mode is referred to as a quadrant. Note that everything is referenced to terminal MT1.

FIGURE 2: TRIAC QUADRANTS

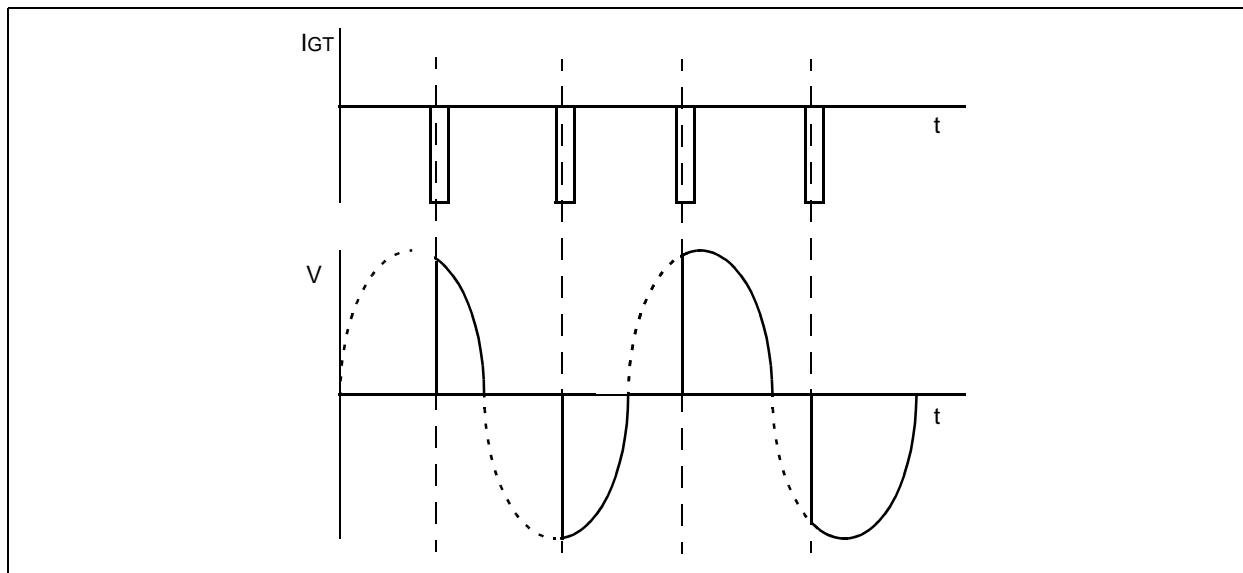


Triacs are typically most sensitive in QI and QIII, slightly less sensitive in QII and least sensitive in QIV. The triac used in this application note, for instance, requires a trigger current of 25 mA for Q1, QII and QIII and 50 mA for QIV. Triggering in QIV should be avoided unless special circumstances dictate it. A low-cost solution will use the same trigger signal for each half wave. Since QIV should be avoided, a negative trigger signal with respect to MT1 is used. This corresponds to operation in QII and QIII.

TRIGGERING

One nice characteristic of the triac is the fact that it is triggered by current rather than voltage. In other words, it is the amount of current injected at the gate, not the magnitude of voltage applied to the gate that determines whether or not the triac is turned on. This characteristic makes triacs useful in the digital realm where voltages are significantly less than 115 VAC or 220 VAC. A PICmicro microcontroller operates in the 2.5V-5V range, yet it can sink and source 25 mA on its I/O pins. During any half-cycle of the AC waveform, a negative current pulse (with respect to MT1) of sufficient width and magnitude will trigger the triac. The width and magnitude of the triggering current varies per triac and is specified in the triac manufacturer's data sheet. The triac will conduct current until the half-cycle is completed and then revert to the non-conductive or blocking state. Figure 3 illustrates this characteristic of triacs.

FIGURE 3: PHASE CONTROL



PHASE CONTROL

Figure 3 is also an example of phase control. Phase control is one method for controlling the amount of power delivered to the load. Phase control works by turning on a fraction of each half-wave, similar to pulse width modulating a digital signal. Current to the load is proportional to the integral of each sine wave. This type of triac control is commonly used in light dimmers. The light's brightness will be proportional to the area under the curve.

The benefit of phase control is that the frequency of the waveform providing power to the load is unchanged at 60 Hz. This is necessary when dimming a light because if the frequency were much less, flickers in the light would be detectable by the human eye. The drawback to phase control is that switching the AC waveform in the manner described produces undesirable electromagnetic interference (EMI). Care must be taken to prevent this EMI from radiating back onto the line or affecting the triac circuit itself.

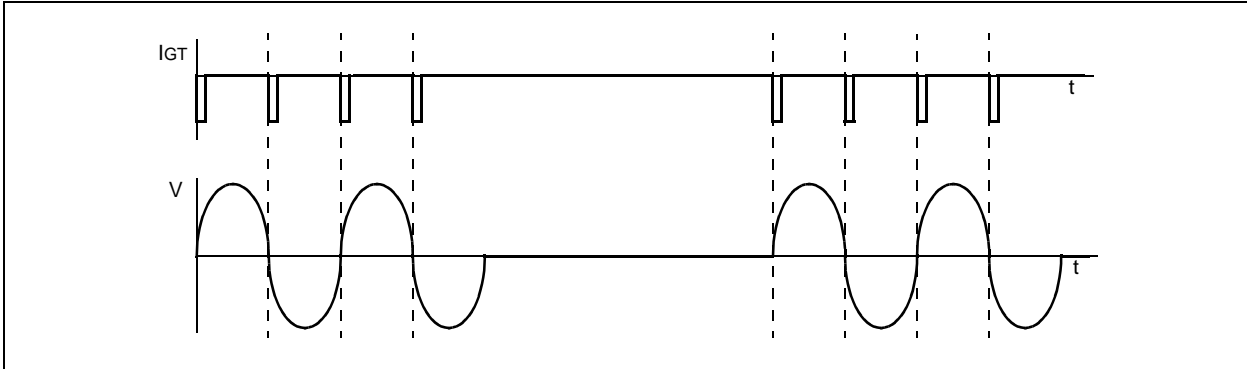
AN958

ZERO-CROSS SWITCHING

An alternative to phase control is zero cross switching. Zero cross switching eliminates most EMI problems because an entire cycle is either on or off. To vary the average current sent to the load, alternating cycles are skipped (see Figure 4). This method of control is not suitable for light dimmers because the intensity of the light will noticeably fluctuate. However, in the case of a resistive heating element, this method of control is preferred for its lower EMI.

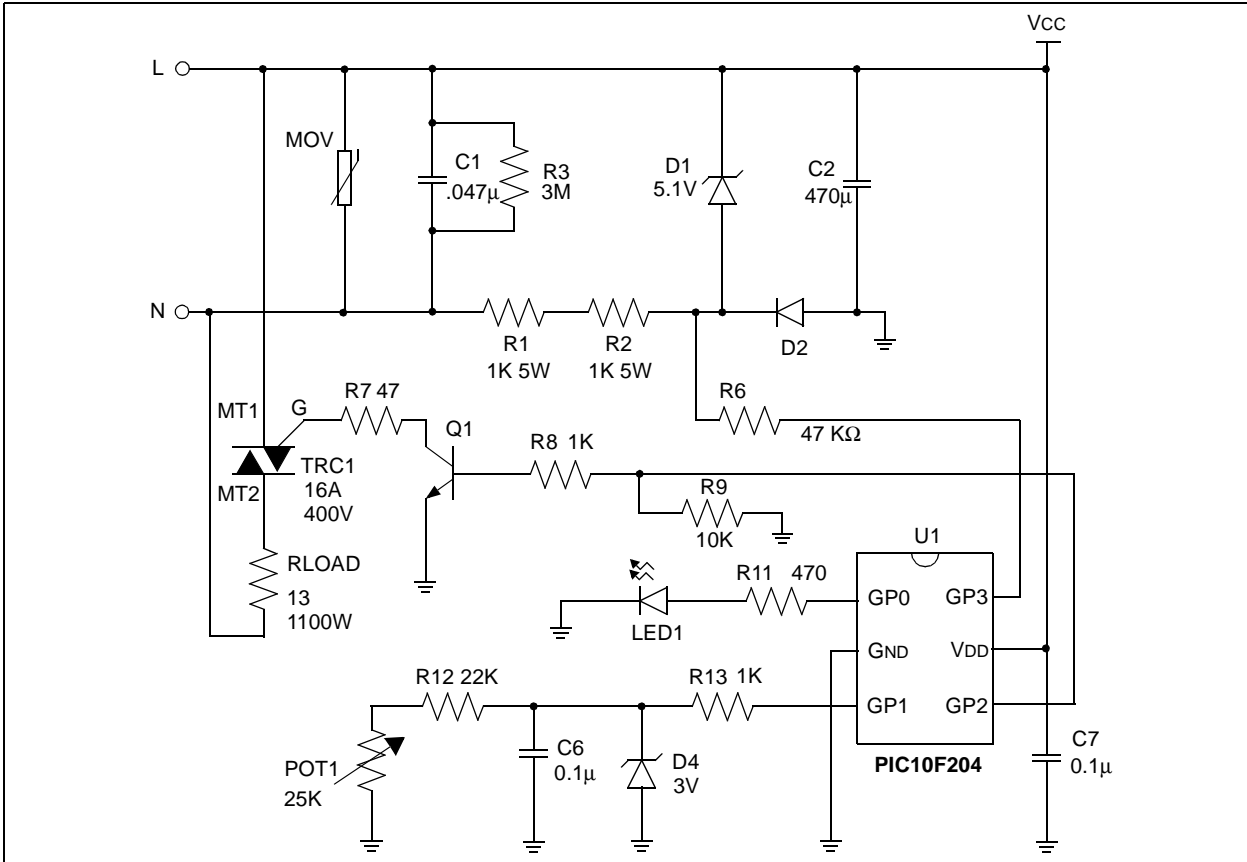
Zero cross switching and phase control both require that the point at which voltage on the line crosses neutral be detected. A method of detecting a zero cross is detailed in application note AN521, *Interfacing to AC Power Lines*. A different zero cross detection method is used for this application. This method is detailed in the next section.

FIGURE 4: ZERO-CROSS SWITCHING



HARDWARE

FIGURE 5: ELECTRONIC THERMOSTAT SOLUTION



The circuit for the low-cost thermostat solution is shown in Figure 5. Power to the microcontroller is provided by a transformerless resistive power supply. An analysis of resistive power supplies is given in application note AN954, *Transformerless Power Supplies: Resistive and Capacitive*. The resistive power supply was sized to provide the necessary current for powering the microcontroller, switching the triac, turning on the LED and charging the ADC circuit used to read the potentiometer.

The system is an open-loop system just as with the mechanical thermostat. The potentiometer provides input from the user. This input is then translated into an output to the triac. When the triac is being modulated, the LED is turned on to indicate the unit is on.

A 1100 Watt heating element is being switched by the triac. In counties using 115VAC, this translates to an rms current of nearly 9 amps, therefore, a rather large triac is needed. A 16 amp triac is used to insure an adequate margin of safety. The triac is mounted to a heat sink in order to prevent thermal runaway on the triac.

One benefit of using this type of transformerless power supply is that the zero cross is detected by tying a pin on the microcontroller directly to the anode of the zener diode. This node will transition between -0.6V and VZENER on every zero cross. Figure 6 compares the waveform seen at this node to the line voltage.

The triac used is a Q4016LH3 from Teccor Electronics. This triac comes in a T0-220AB package and is rated at 400V, 16 amps. The microcontroller triggers the triac by turning on Q1 for 2 ms at the start of a half-cycle. Q1 then pulls the gate on the triac low with respect to MT1 and the triac conducts current.

An RC circuit is used to translate the resistive value of the potentiometer into a measurable time. The 3V zener diode (D4) ensures that fluctuations in the microcontroller VDD reference do not affect the accuracy of the time constant. (In reality, the ground reference actually fluctuates when current is drawn from C2 because VDD is referenced to the line voltage). The time it takes for the voltage to decay has a direct correlation to the setting of the potentiometer. The circuit works by first configuring GP1 as an output and charging C6. Once C6 is charged, GP1 is configured as a comparator input. The voltage on GP1 is compared to the internal band gap reference voltage of the microcontroller (approximately 0.6V.) When the voltage of the decaying RC circuit falls below the reference voltage, the output on the comparator will go high. This output is read internally by the microcontroller.

The time it takes for VOUT to trip the comparator is given by Equation 1.

EQUATION 1:

$$t = -(RPOT1 + R12)C1 \ln\left(\frac{V_{REF}}{V_Z}\right)$$

Where VREF is 0.6V and VZ is 3V

FIGURE 6: ZERO-CROSS DETECT WAVEFORM

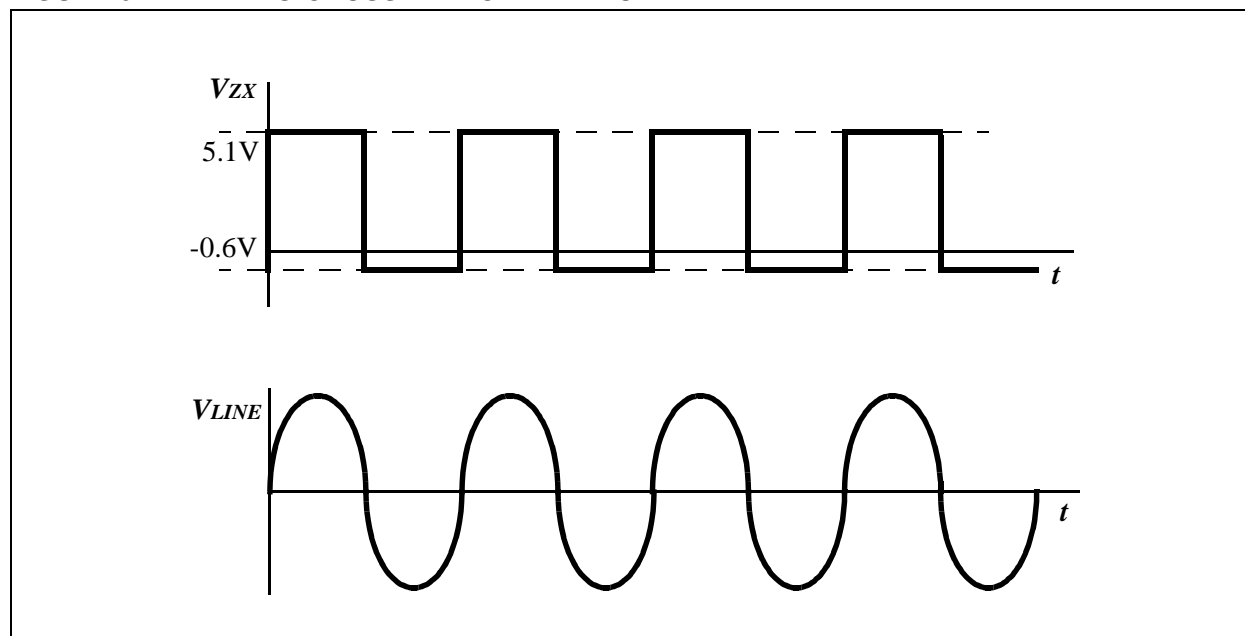
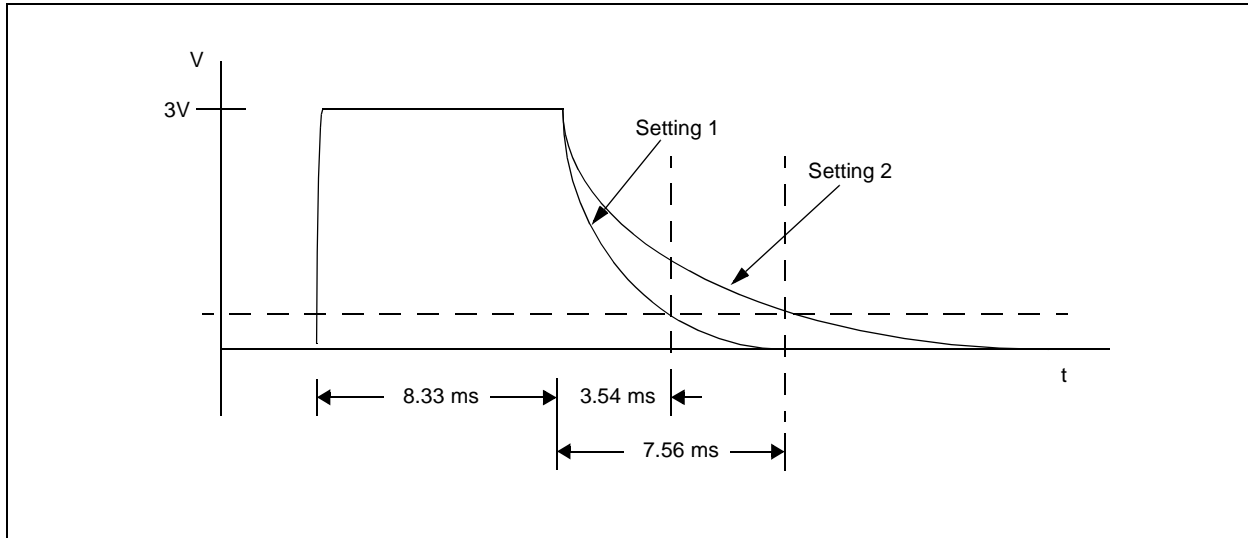


FIGURE 7: CHARGING AND DISCHARGING OF POTENTIOMETER READ CIRCUIT



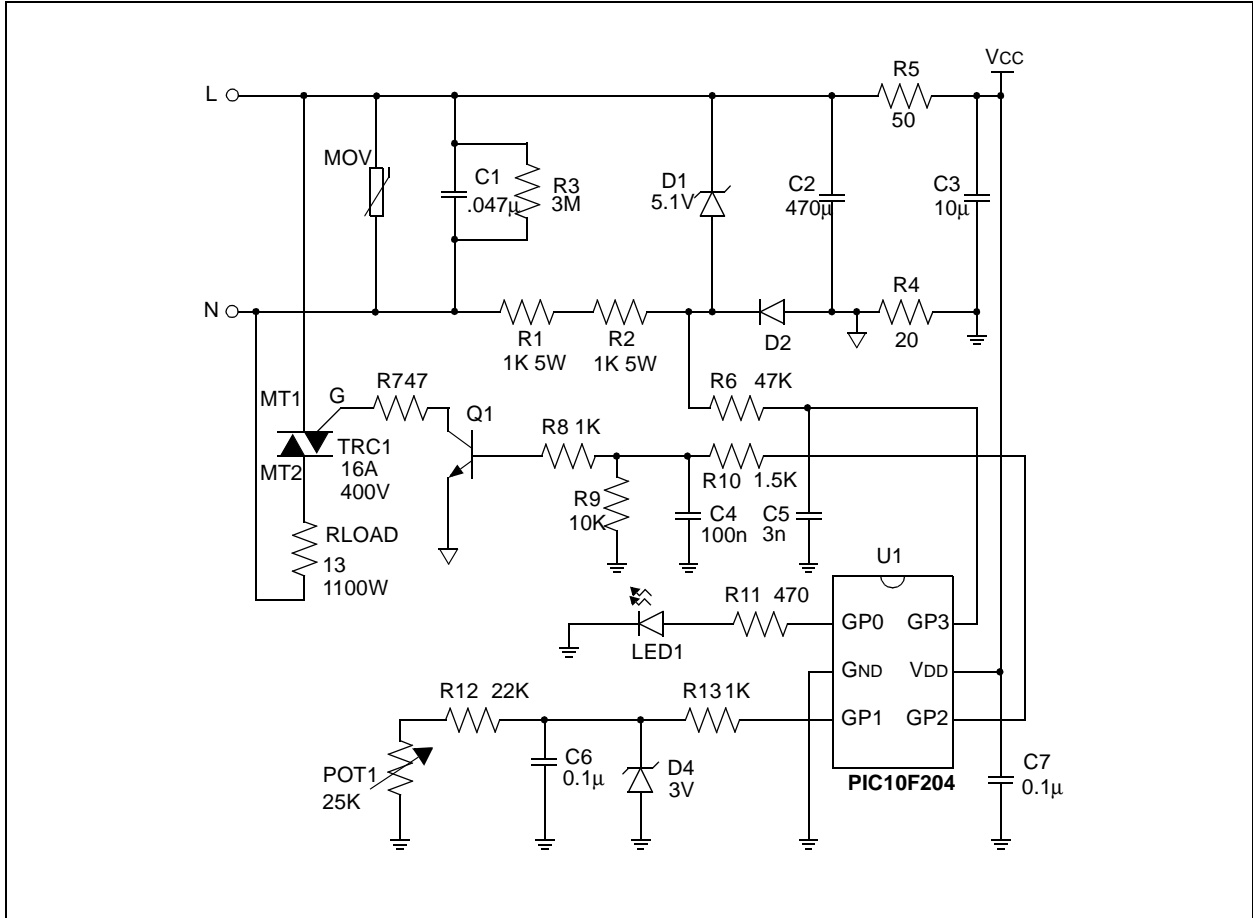
The potentiometer varies linearly from $0\ \Omega$ to $25\ \text{k}\Omega$. The resistance of the potentiometer has a linear relation to time. More precisely, calculating the time of decay using Equation 1 and given the range of the potentiometer yields a decay ranging from $3.53\ \text{ms}$ to $7.56\ \text{ms}$. The RC time constant was chosen carefully so that the maximum time for the circuit to delay is just under one half-cycle time or $8.33\ \text{ms}$. This makes it possible to initiate the discharge of the circuit on a zero cross and measure the decay time of the output voltage before the next zero cross. Figure 7 shows what the waveform looks like on the GP1 read cycle.

NOISE CONSIDERATIONS

The circuit described in Figure 5 assumes that the line and neutral signals are relatively free from noise. In the real world, noise on the AC lines can have a profound affect on the behavior of a microcontroller, especially, when it is not isolated from the AC lines. Noise in the MHz range is especially damaging because it can be in the tens of kilo volts. Designing in some noise filtering up front will save a lot of time and agony during the testing and certification phases of a project.

Creating a robust solution is based on one premise, isolate the microcontroller from high frequency noise. Not only must the supply voltage and ground be isolated, but also all the microcontroller pins that are connected to the "noisy world." Figure 8 shows the same circuit as before only with proper filtering incorporated into the design.

FIGURE 8: ROBUST ELECTRONIC THERMOSTAT



AN958

In this circuit, a π filter has been added between the main storage capacitor and the microcontroller. An additional ground reference has been added. Now two grounds exist – one in the noisy world and one in the quiet world. The microcontroller sits in the quiet world while the triac sits in the noisy world. Pins GP1 and GP3 previously connected directly to the noisy world. In the new circuit, a low-pass filter has been added to each of these traces. The 3 dB cut-off frequency for a RC filter is given in Equation 2.

EQUATION 2:

$$f = \frac{1}{2\pi RC}$$

The filters on the traces from the microcontroller to the zero cross detection point and bipolar junction transistor each have 3 dB cut-off frequencies of approximately 1 kHz. Ceramic capacitors are used as they are most effective for combating radio frequency interference.

SOFTWARE

The program loop for the firmware centers around the zero cross event. When a zero cross is detected, the microcontroller first decides whether or not the triac should be on during the present half-cycle. The triac is turned on by driving GP2 high for 2 ms. During the positive half-cycle, GP1 is configured as an output and charges C6. During the negative half-cycle, GP1 is configured as an input to the PIC10F's internal comparator. The time it takes for the comparator to trip is measured using Timer0. This measurement is then used to decide how many half-cycles, out of a total of 10, the triac should be turned on. If the answer is anything other than zero, the microcontroller will turn on the status LED and start a 2 hour automatic shutdown timer. This timer is only reset if the potentiometer is turned back to the off position (no cycles on). Should the automatic shutdown timer flash, the triac will be switched off and remain off until someone either interrupts power to the device (i.e., unplugs it) or the potentiometer is turned to the off position and then back on.

CONCLUSION

The PIC10F204 thermostat implemented in this application note has many benefits over the adjustable mechanical thermostat it is designed to replace. These benefits include:

1. Better reliability due to minimal mechanical components.
2. Built in safety features like automatic shutdown.
3. Built in visual feedback to let the user know when the unit is on.
4. Flexible design and programability via In-Circuit Serial Programming™ (ICSP™) (i.e., the same switch can be used in multiple applications).
5. Increased accuracy and good simmer performance.

Other possibilities not given in this particular solution include:

1. Temperature feedback
2. Self-calibration

PROGRAM MEMORY REQUIREMENTS

- 129 12-bit instructions

DATA MEMORY REQUIREMENTS

- 9 bytes

REFERENCES

- AN954, *Transformerless Power Supplies: Resistive and Capacitive*, Condit, Reston, Microchip Technology Inc., 2004.
- AN521, *Interfacing to AC Power Lines*, Cox, Doug, Microchip Technology Inc., 1997.
- DL137/D, Revision 6, *Thyristor Device Data, Triac and SCRs*, Motorola, 1995.

Note the following details of the code protection feature on Microchip devices:

- Microchip products meet the specification contained in their particular Microchip Data Sheet.
- Microchip believes that its family of products is one of the most secure families of its kind on the market today, when used in the intended manner and under normal conditions.
- There are dishonest and possibly illegal methods used to breach the code protection feature. All of these methods, to our knowledge, require using the Microchip products in a manner outside the operating specifications contained in Microchip's Data Sheets. Most likely, the person doing so is engaged in theft of intellectual property.
- Microchip is willing to work with the customer who is concerned about the integrity of their code.
- Neither Microchip nor any other semiconductor manufacturer can guarantee the security of their code. Code protection does not mean that we are guaranteeing the product as "unbreakable."

Code protection is constantly evolving. We at Microchip are committed to continuously improving the code protection features of our products. Attempts to break Microchip's code protection feature may be a violation of the Digital Millennium Copyright Act. If such acts allow unauthorized access to your software or other copyrighted work, you may have a right to sue for relief under that Act.

Information contained in this publication regarding device applications and the like is provided only for your convenience and may be superseded by updates. It is your responsibility to ensure that your application meets with your specifications. MICROCHIP MAKES NO REPRESENTATIONS OR WARRANTIES OF ANY KIND WHETHER EXPRESS OR IMPLIED, WRITTEN OR ORAL, STATUTORY OR OTHERWISE, RELATED TO THE INFORMATION, INCLUDING BUT NOT LIMITED TO ITS CONDITION, QUALITY, PERFORMANCE, MERCHANTABILITY OR FITNESS FOR PURPOSE. Microchip disclaims all liability arising from this information and its use. Use of Microchip's products as critical components in life support systems is not authorized except with express written approval by Microchip. No licenses are conveyed, implicitly or otherwise, under any Microchip intellectual property rights.

Trademarks

The Microchip name and logo, the Microchip logo, Accuron, dsPIC, KEELOQ, microID, MPLAB, PIC, PICmicro, PICSTART, PRO MATE, PowerSmart, rfPIC, and SmartShunt are registered trademarks of Microchip Technology Incorporated in the U.S.A. and other countries.


AmpLab, FilterLab, MXDEV, MXLAB, PICMASTER, SEEVAL, SmartSensor and The Embedded Control Solutions Company are registered trademarks of Microchip Technology Incorporated in the U.S.A.

Analog-for-the-Digital Age, Application Maestro, dsPICDEM, dsPICDEM.net, dsPICworks, ECAN, ECONOMONITOR, FanSense, FlexROM, fuzzyLAB, In-Circuit Serial Programming, ICSP, ICEPIC, Migratable Memory, MPASM, MPLIB, MPLINK, MPSIM, PICkit, PICDEM, PICDEM.net, PICLAB, PICtail, PowerCal, PowerInfo, PowerMate, PowerTool, rLAB, rfPICDEM, Select Mode, Smart Serial, SmartTel and Total Endurance are trademarks of Microchip Technology Incorporated in the U.S.A. and other countries.

SQTP is a service mark of Microchip Technology Incorporated in the U.S.A.

All other trademarks mentioned herein are property of their respective companies.

© 2004, Microchip Technology Incorporated, Printed in the U.S.A., All Rights Reserved.

 Printed on recycled paper.

QUALITY MANAGEMENT SYSTEM
CERTIFIED BY DNV
== ISO/TS 16949:2002 ==

Microchip received ISO/TS-16949:2002 quality system certification for its worldwide headquarters, design and wafer fabrication facilities in Chandler and Tempe, Arizona and Mountain View, California in October 2003. The Company's quality system processes and procedures are for its PICmicro® 8-bit MCUs, KEELOQ® code hopping devices, Serial EEPROMs, microperipherals, nonvolatile memory and analog products. In addition, Microchip's quality system for the design and manufacture of development systems is ISO 9001:2000 certified.



WORLDWIDE SALES AND SERVICE

AMERICAS

Corporate Office
2355 West Chandler Blvd.
Chandler, AZ 85224-6199
Tel: 480-792-7200
Fax: 480-792-7277
Technical Support:
<http://support.microchip.com>
Web Address:
www.microchip.com

Atlanta
Alpharetta, GA
Tel: 770-640-0034
Fax: 770-640-0307

Boston
Westford, MA
Tel: 978-692-3848
Fax: 978-692-3821

Chicago
Itasca, IL
Tel: 630-285-0071
Fax: 630-285-0075

Dallas
Addison, TX
Tel: 972-818-7423
Fax: 972-818-2924

Detroit
Farmington Hills, MI
Tel: 248-538-2250
Fax: 248-538-2260

Kokomo
Kokomo, IN
Tel: 765-864-8360
Fax: 765-864-8387

Los Angeles
Mission Viejo, CA
Tel: 949-462-9523
Fax: 949-462-9608

San Jose
Mountain View, CA
Tel: 650-215-1444
Fax: 650-961-0286

Toronto
Mississauga, Ontario,
Canada
Tel: 905-673-0699
Fax: 905-673-6509

ASIA/PACIFIC

Australia - Sydney
Tel: 61-2-9868-6733
Fax: 61-2-9868-6755

China - Beijing
Tel: 86-10-8528-2100
Fax: 86-10-8528-2104

China - Chengdu
Tel: 86-28-8676-6200
Fax: 86-28-8676-6599

China - Fuzhou
Tel: 86-591-750-3506
Fax: 86-591-750-3521

China - Hong Kong SAR
Tel: 852-2401-1200
Fax: 852-2401-3431

China - Shanghai
Tel: 86-21-5407-5533
Fax: 86-21-5407-5066

China - Shenyang
Tel: 86-24-2334-2829
Fax: 86-24-2334-2393

China - Shenzhen
Tel: 86-755-8203-2660
Fax: 86-755-8203-1760

China - Shunde
Tel: 86-757-2839-5507
Fax: 86-757-2839-5571

China - Qingdao
Tel: 86-532-502-7355
Fax: 86-532-502-7205

ASIA/PACIFIC

India - Bangalore
Tel: 91-80-2229-0061
Fax: 91-80-2229-0062

India - New Delhi
Tel: 91-11-5160-8631
Fax: 91-11-5160-8632

Japan - Kanagawa
Tel: 81-45-471-6166
Fax: 81-45-471-6122

Korea - Seoul
Tel: 82-2-554-7200
Fax: 82-2-558-5932 or
82-2-558-5934

Singapore
Tel: 65-6334-8870
Fax: 65-6334-8850

Taiwan - Kaohsiung
Tel: 886-7-536-4818
Fax: 886-7-536-4803

Taiwan - Taipei
Tel: 886-2-2500-6610
Fax: 886-2-2508-0102

Taiwan - Hsinchu
Tel: 886-3-572-9526
Fax: 886-3-572-6459

EUROPE

Austria - Weis
Tel: 43-7242-2244-399
Fax: 43-7242-2244-393

Denmark - Ballerup
Tel: 45-4420-9895
Fax: 45-4420-9910

France - Massy
Tel: 33-1-69-53-63-20
Fax: 33-1-69-30-90-79

Germany - Ismaning
Tel: 49-89-627-144-0
Fax: 49-89-627-144-44

Italy - Milan
Tel: 39-0331-742611
Fax: 39-0331-466781

Netherlands - Drunen
Tel: 31-416-690399
Fax: 31-416-690340

England - Berkshire
Tel: 44-118-921-5869
Fax: 44-118-921-5820