

## Analog to Digital Conversion Using a PIC16C54

Author: *Doug Cox*  
Microchip Technology Inc.

### INTRODUCTION

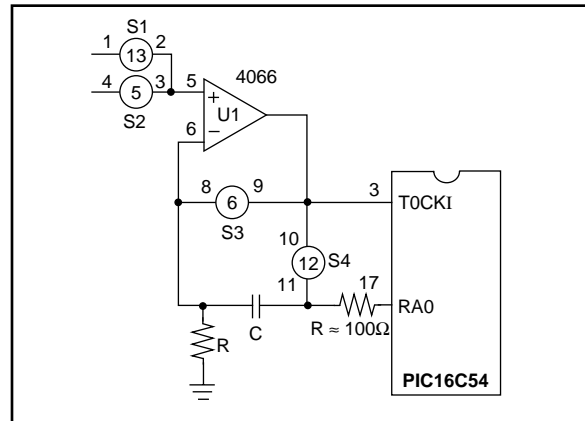
This application note describes a method for implementing analog to digital (A/D) conversion on the PIC16C5X series of microcontrollers. The converter requires only five external components and is software and hardware configurable for conversion resolutions from 6-bits up to 10-bits and conversion times of 250  $\mu$ s or longer. The method is usable for both voltage and current conversion and uses a software calibration technique that compensates for time and temperature drift as well as component errors. PIC16C5X microcontrollers are ideal for simple analog applications because:

- Very low cost
- Few external components required
- Fully programmable. PIC16C5X microcontrollers are offered as One-Time-Programmable (OTP) EPROM devices.
- Available off the shelf from distributors
- Calibration in software for improved measurement accuracy
- Power savings using Sleep mode
- Output pins have large, current source/sink capability to drive LED's directly

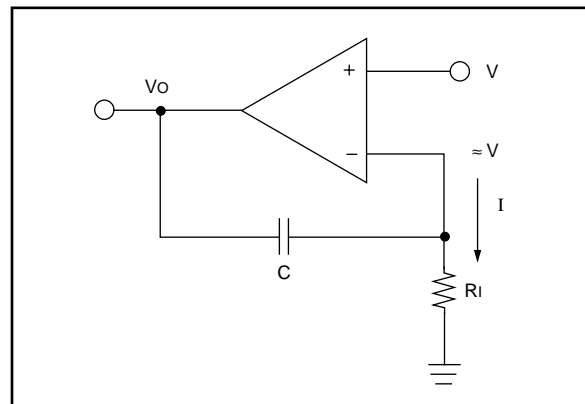
### THEORY OF OPERATION

The application uses a capacitive charging circuit (Figure 1) to convert the input voltage to time, which can be easily measured using a microcontroller. First, the reference voltage is applied to the input voltage to the current converter (U1). The equivalent circuit is shown in Figure 2. This circuit provides a linearly variable current as a function of input voltage. The logarithmic characteristic that would occur if the input voltage was applied directly to an RC is not present. The capacitor C is charged up until the threshold on the chip input trips. This generates a software calibration value that is used to calibrate out most circuit errors, including; inaccuracies in the resistor and capacitor, changes in the input threshold voltage, and temperature variations. After the software calibration value is measured, the capacitor is discharged (Figure 3), and the input voltage is connected to  $V_{IN}$ . The time to the trip threshold is measured for the input voltage and compared to the calibration value to determine the actual input voltage.

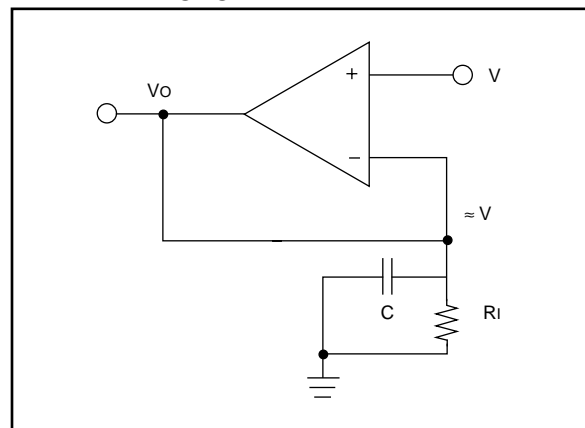
**FIGURE 1: VOLTMETER A/D CONVERTER**



**FIGURE 2: VOLTMETER MEASUREMENT CYCLE**



**FIGURE 3: VOLTMETER DISCHARGE CYCLE**



## CIRCUIT CONFIGURATION

The values of R and C are selected based upon the number of bits of resolution required.

$$RC = (V_I \cdot T) / V_T$$

Where:

$V_I$  = Lowest voltage to be measured (at least ten LSB's)

T = Time to do the number of bits of resolution desired

$V_T$  = Threshold voltage of the PIC16C5X input being used

Actual value for RC should be slightly smaller than calculated to ensure that the PIC16C5X does not overcount during the measurement.

For example use a 3V input and 8-bit resolution with a 8 MHz clock and 6 instruction cycles per count:

$$V_I = 100 \text{ mV}$$

$$T = 256 \cdot 1/8 \text{ MHz} \cdot 4 \text{ clocks/cycle} \cdot 6 \text{ cycles} = 768 \mu\text{s}$$

$$V_T = 3.0\text{V (est)}$$

For input voltages greater than 3V a resistor divider network should be used to keep the maximum voltage on  $V_{IN}$  to less than 3V. For best performance the reference voltage should be between 2V and 3V.

The circuit can also be used as a current mode A/D converter. In this case the input voltage to current converter is not needed and the reference current and input current are both routed via analog switches directly into the capacitor.

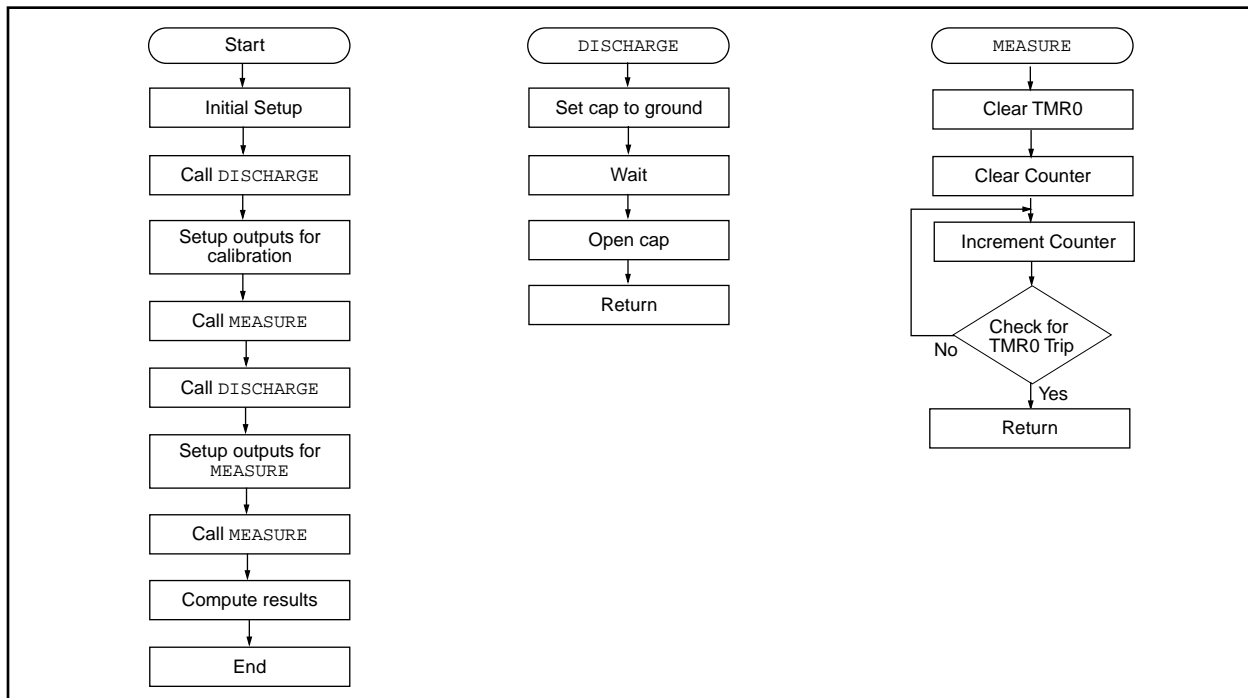
## CIRCUIT PERFORMANCE

The calibration cycle removes all first order errors (offset, gain, R and C inaccuracy, power supply voltage and temperature) except the reference voltage drift. Any change in the reference voltage, including noise, between the calibration cycle and the measurement cycle may result in measurement errors. Other error sources may be analog switch leakage, resistor and capacitor non-linearities, input threshold uncertainty and time measurement uncertainty ( $\pm$  one instruction cycle time). Measured performance shows the converter to be accurate within  $\pm 1\%$  of full scale.

### Example

Assembly code implementing the circuit of Figure 1 is listed in Appendix A. This code measures the time up to 16-bits and calculates the results using 16-bit multiply and divide subroutines. In actual applications, if measurement accuracy permits, it may be advantageous to use 8-bits. The math code can be substantially reduced and the measure time is reduced by the simpler code and shorter count.

**FIGURE 4: TRANSMISSION FLOWCHART**



Please check the Microchip BBS for the latest version of the source code. Microchip's Worldwide Web Address: [www.microchip.com](http://www.microchip.com); Bulletin Board Support: MCHIPBBS using CompuServe® (CompuServe membership not required).

## APPENDIX A: VOLTMETER/AD CONVERTER PROGRAM

MPASM 01.40 Released

VOLTMETR.ASM 1-16-1997 12:35:25

PAGE 1

```

LOC  OBJECT CODE      LINE SOURCE TEXT
VALUE
                                00001          TITLE  `VOLTMETER/AD CONVERTER PROGRAM REV 3-29-90'
                                00002          LIST   P=16C54
                                00003          ;
                                00004          ;*****
                                00005          ;
                                00006          ;      Program:          VOLTMETR.ASM
                                00007          ;      Revision Date:
                                00008          ;                  1-13-97      Compatibility with MPASMWIN 1.40
                                00009          ;
                                00010          ;*****
                                00011          ;
00000008          00012  ACCA    EQU     8
0000000A          00013  ACCB    EQU     0A
0000000C          00014  ACCC    EQU     0C
0000000E          00015  ACCD    EQU     0E
00000010          00016  ACCE    EQU     10
00000012          00017  TMEAS   EQU     12
00000014          00018  TEMP    EQU     14
                                00019          ;
00000001          00020  F      EQU     1
                                00021          ;
00000060          00022  VCALMS  EQU     60          ;VCAL MSB VALUE IN HEX
000000A4          00023  VCALLS  EQU     0A4        ;VCAL LSB VALUE IN HEX
                                00024
01FF              00025          ORG 1FF
01FF 0A58          00026          GOTO  VOLTS          ;PROGRAM CODE
0000              00027          ORG    0            ;SUBROUTINES
                                00028
0000 0209          00029  MADD    MOVF    ACCA+1,W
0001 01EB          00030          ADDWF   ACCB+1, F    ;ADD LSB
0002 0603          00031          BTFSC  3,0          ;ADD IN CARRY
0003 02AA          00032          INCF   ACCB, F
0004 0208          00033          MOVF   ACCA,W
0005 01EA          00034          ADDWF  ACCB, F      ;ADD MSB
0006 0800          00035          RETLW  0
0007 0000          00036          NOP
                                00037
0008 0915          00038  MPY    CALL    SETUP          ;RESULTS IN B(16 MSB'S) AND C(16 LSB'S)
0009 032E          00039  MLOOP  RRF     ACCD, F      ;ROTATE D RIGHT
000A 032F          00040          RRF    ACCD+1, F
000B 0603          00041          SKPNC          ;NEED TO ADD?
000C 0900          00042          CALL   MADD
000D 032A          00043          RRF    ACCB, F
000E 032B          00044          RRF    ACCB+1, F
000F 032C          00045          RRF    ACCC, F
0010 032D          00046          RRF    ACCC+1, F
0011 02F4          00047          DECFSZ TEMP, F    ;LOOP UNTIL ALL BITS CHECKED
0012 0A09          00048          GOTO   MLOOP
0013 0800          00049          RETLW  0
                                00050
0014 0000          00051          NOP
0015 0C10          00052  SETUP  MOVLW  10
0016 0034          00053          MOVWF  TEMP
0017 020A          00054          MOVF   ACCB,W      ;MOVE B TO D

```

# AN513

```
0018 002E      00055      MOVWF  ACCD
0019 020B      00056      MOVF   ACCB+1,W
001A 002F      00057      MOVWF  ACCD+1
001B 020C      00058      MOVF   ACCC,W
001C 0030      00059      MOVWF  ACCE
001D 020D      00060      MOVF   ACCC+1,W
001E 0031      00061      MOVWF  ACCE+1
001F 006A      00062      CLRF   ACCB
0020 006B      00063      CLRF   ACCB+1
0021 0800      00064      RETLW  0
                00065
0022 0000      00066      NOP
0023 0915      00067  DIV    CALL   SETUP
0024 0C20      00068      MOVLW  20
0025 0034      00069      MOVWF  TEMP
0026 006C      00070      CLRF   ACCC
0027 006D      00071      CLRF   ACCC+1
0028 0403      00072  DLOOP   CLRC
0029 0371      00073      RLF    ACCE+1, F
002A 0370      00074      RLF    ACCE, F
002B 036F      00075      RLF    ACCD+1, F
002C 036E      00076      RLF    ACCD, F
002D 036D      00077      RLF    ACCC+1, F
002E 036C      00078      RLF    ACCC, F
002F 0208      00079      MOVF   ACCA,W
0030 008C      00080      SUBWF  ACCC,W      ;CHECK IF A>C
0031 0743      00081      SKPZ
0032 0A35      00082      GOTO   NOCHK
0033 0209      00083      MOVF   ACCA+1,W
0034 008D      00084      SUBWF  ACCC+1,W    ;IF MSB EQUAL THEN CHECK LSB
0035 0703      00085  NOCHK   SKPC      ;CARRY SET IF C>A
0036 0A3E      00086      GOTO   NOGO
0037 0209      00087      MOVF   ACCA+1,W    ;C-A INTO C
0038 00AD      00088      SUBWF  ACCC+1, F
0039 0703      00089      BTFSS  3,0
003A 00EC      00090      DECF   ACCC, F
003B 0208      00091      MOVF   ACCA,W
003C 00AC      00092      SUBWF  ACCC, F
003D 0503      00093      SETC      ;SHIFT A 1 INTO B (RESULT)
003E 036B      00094  NOGO    RLF    ACCB+1, F
003F 036A      00095      RLF    ACCB, F
0040 02F4      00096      DECFSZ TEMP, F     ;LOOP UNTILL ALL BITS CHECKED
0041 0A28      00097      GOTO   DLOOP
0042 0800      00098      RETLW  0
                00099
0043 0C0E      00100  DSCHRG  MOVLW  B'00001110' ;DISCHARGE C (RA0 ON)
0044 0005      00101      TRIS   5
0045 0CFF      00102      MOVLW  0FF
0046 0034      00103      MOVWF  TEMP
0047 02F4      00104  LOOP    DECFSZ TEMP, F   ;WAIT
0048 0A47      00105      GOTO   LOOP
0049 0C0F      00106      MOVLW  B'00001111' ;ALL RA HIGH Z
004A 0005      00107      TRIS   5
004B 0800      00108      RETLW  0
                00109
004C 0061      00110  M_TIME  CLRF   1           ;CLEAR TMR0 REGISTER
004D 0069      00111      CLRF   ACCA+1      ;CLEAR 16 BIT COUNTER
004E 0068      00112      CLRF   ACCA
004F 03E9      00113  TLOOP   INCFSZ ACCA+1, F
0050 0A54      00114      GOTO   ENDCHK
0051 03E8      00115      INCFSZ ACCA, F
0052 0A54      00116      GOTO   ENDCHK
0053 0A56      00117      GOTO   END_M
0054 0701      00118  ENDCHK  BTFSS  1,0         ;CHECK FOR TMR0 TRIP
0055 0A4F      00119      GOTO   TLOOP
0056 0201      00120  END_M   MOVF   1,W
```

```

0057 0800          00121      RETLW    0
                   00122
0058 0C06          00123 VOLTS    MOVLW   B'00000110' ;SET S2 AND S3 HIGH(ON WHEN ACTIVATED)
0059 0026          00124      MOVWF   6
005A 0CF0          00125      MOVLW   B'11110000' ;ACTIVATE SWITCHES S1-S4
005B 0006          00126      TRIS    6
005C 0C28          00127      MOVLW   B'00101000' ;SELECT POSITIVE EDGE FOR TMR0
005D 0002          00128      OPTION
005E 0C00          00129      MOVLW   B'00000000'
005F 0025          00130      MOVWF   5 ;SET RA0 LOW (ON WHEN ACTIVATED)
                   00131
0060 0943          00132 MEAS     CALL    DSCHRG ;CHARGE CAPACITOR TO VIN
0061 0C0A          00133      MOVLW   B'00001010' ;S2 AND S4 ON
0062 0026          00134      MOVWF   6
0063 094C          00135      CALL    M_TIME ;MEASURE TIME
0064 0209          00136      MOVF   ACCA+1,W
0065 0033          00137      MOVWF  TMEAS+1 ;STORE LSB
0066 0208          00138      MOVF   ACCA,W
0067 0032          00139      MOVWF  TMEAS ;STORE MSB
                   00140
0068 0C05          00141 CAL      MOVLW   B'00000101' ;S1 AND S3 ON
0069 0026          00142      MOVWF   6
006A 0943          00143      CALL    DSCHRG ;CHARGE CAPACITOR TO VREF
006B 0C09          00144      MOVLW   B'00001001' ;S1 AND S4 ON
006C 0026          00145      MOVWF   6
006D 094C          00146      CALL    M_TIME ;MEASURE TIME
                   00147
006E 0CA4          00148      MOVLW   VCALLS
006F 002B          00149      MOVWF  ACCB+1
0070 0C60          00150      MOVLW  VCALLMS
0071 002A          00151      MOVWF  ACCB
                   00152
0072 0908          00153      CALL    MPY ;MULTIPLY ACCA(TCAL) * ACCB(VREF)
0073 0213          00154      MOVF   TMEAS+1,W
0074 0029          00155      MOVWF  ACCA+1
0075 0212          00156      MOVF   TMEAS,W
0076 0028          00157      MOVWF  ACCA
                   00158
0077 0923          00159      CALL    DIV ;DIVIDE ACCB(TCAL * V) BY ACCA(TMEAS)
                   00160
0078 0A58          00161      GOTO   VOLTS
                   00162
                   00163      END

```

MEMORY USAGE MAP ('X' = Used, '-' = Unused)

```

0000 : XXXXXXXXXXXXXXXXXXXX XXXXXXXXXXXXXXXXXXXX XXXXXXXXXXXXXXXXXXXX XXXXXXXXXXXXXXXXXXXX
0040 : XXXXXXXXXXXXXXXXXXXX XXXXXXXXXXXXXXXXXXXX XXXXXXXXXXXXXXXXXXXX XXXXXXXXXXXX-----
01C0 : -----X

```

All other memory blocks unused.

```

Program Memory Words Used: 122
Program Memory Words Free: 390

```

```

Errors : 0
Warnings : 0 reported, 0 suppressed
Messages : 0 reported, 0 suppressed

```

---

---

**Note the following details of the code protection feature on PICmicro® MCUs.**

- The PICmicro family meets the specifications contained in the Microchip Data Sheet.
- Microchip believes that its family of PICmicro microcontrollers is one of the most secure products of its kind on the market today, when used in the intended manner and under normal conditions.
- There are dishonest and possibly illegal methods used to breach the code protection feature. All of these methods, to our knowledge, require using the PICmicro microcontroller in a manner outside the operating specifications contained in the data sheet. The person doing so may be engaged in theft of intellectual property.
- Microchip is willing to work with the customer who is concerned about the integrity of their code.
- Neither Microchip nor any other semiconductor manufacturer can guarantee the security of their code. Code protection does not mean that we are guaranteeing the product as “unbreakable”.
- Code protection is constantly evolving. We at Microchip are committed to continuously improving the code protection features of our product.

If you have any further questions about this matter, please contact the local sales office nearest to you.

---

Information contained in this publication regarding device applications and the like is intended through suggestion only and may be superseded by updates. It is your responsibility to ensure that your application meets with your specifications. No representation or warranty is given and no liability is assumed by Microchip Technology Incorporated with respect to the accuracy or use of such information, or infringement of patents or other intellectual property rights arising from such use or otherwise. Use of Microchip's products as critical components in life support systems is not authorized except with express written approval by Microchip. No licenses are conveyed, implicitly or otherwise, under any intellectual property rights.

#### **Trademarks**


The Microchip name and logo, the Microchip logo, FilterLab, KEELOQ, microID, MPLAB, PIC, PICmicro, PICMASTER, PICSTART, PRO MATE, SEEVAL and The Embedded Control Solutions Company are registered trademarks of Microchip Technology Incorporated in the U.S.A. and other countries.

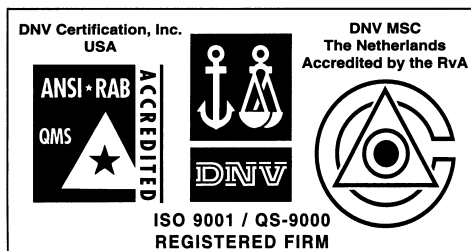
dsPIC, ECONOMONITOR, FanSense, FlexROM, fuzzyLAB, In-Circuit Serial Programming, ICSP, ICEPIC, microPort, Migratable Memory, MPASM, MPLIB, MPLINK, MPSIM, MXDEV, PICC, PICDEM, PICDEM.net, rfPIC, Select Mode and Total Endurance are trademarks of Microchip Technology Incorporated in the U.S.A.

Serialized Quick Turn Programming (SQTP) is a service mark of Microchip Technology Incorporated in the U.S.A.

All other trademarks mentioned herein are property of their respective companies.

© 2002, Microchip Technology Incorporated, Printed in the U.S.A., All Rights Reserved.

 Printed on recycled paper.



*Microchip received QS-9000 quality system certification for its worldwide headquarters, design and wafer fabrication facilities in Chandler and Tempe, Arizona in July 1999. The Company's quality system processes and procedures are QS-9000 compliant for its PICmicro® 8-bit MCUs, KEELOQ® code hopping devices, Serial EEPROMs and microperipheral products. In addition, Microchip's quality system for the design and manufacture of development systems is ISO 9001 certified.*



# MICROCHIP

## WORLDWIDE SALES AND SERVICE

### AMERICAS

#### Corporate Office

2355 West Chandler Blvd.  
Chandler, AZ 85224-6199  
Tel: 480-792-7200 Fax: 480-792-7277  
Technical Support: 480-792-7627  
Web Address: <http://www.microchip.com>

#### Rocky Mountain

2355 West Chandler Blvd.  
Chandler, AZ 85224-6199  
Tel: 480-792-7966 Fax: 480-792-7456

#### Atlanta

500 Sugar Mill Road, Suite 200B  
Atlanta, GA 30350  
Tel: 770-640-0034 Fax: 770-640-0307

#### Boston

2 Lan Drive, Suite 120  
Westford, MA 01886  
Tel: 978-692-3848 Fax: 978-692-3821

#### Chicago

333 Pierce Road, Suite 180  
Itasca, IL 60143  
Tel: 630-285-0071 Fax: 630-285-0075

#### Dallas

4570 Westgrove Drive, Suite 160  
Addison, TX 75001  
Tel: 972-818-7423 Fax: 972-818-2924

#### Detroit

Tri-Atria Office Building  
32255 Northwestern Highway, Suite 190  
Farmington Hills, MI 48334  
Tel: 248-538-2250 Fax: 248-538-2260

#### Kokomo

2767 S. Albright Road  
Kokomo, Indiana 46902  
Tel: 765-864-8360 Fax: 765-864-8387

#### Los Angeles

18201 Von Karman, Suite 1090  
Irvine, CA 92612  
Tel: 949-263-1888 Fax: 949-263-1338

#### New York

150 Motor Parkway, Suite 202  
Hauppauge, NY 11788  
Tel: 631-273-5305 Fax: 631-273-5335

#### San Jose

Microchip Technology Inc.  
2107 North First Street, Suite 590  
San Jose, CA 95131  
Tel: 408-436-7950 Fax: 408-436-7955

#### Toronto

6285 Northam Drive, Suite 108  
Mississauga, Ontario L4V 1X5, Canada  
Tel: 905-673-0699 Fax: 905-673-6509

### ASIA/PACIFIC

#### Australia

Microchip Technology Australia Pty Ltd  
Suite 22, 41 Rawson Street  
Epping 2121, NSW  
Australia  
Tel: 61-2-9868-6733 Fax: 61-2-9868-6755

#### China - Beijing

Microchip Technology Consulting (Shanghai)  
Co., Ltd., Beijing Liaison Office  
Unit 915  
Bei Hai Wan Tai Bldg.  
No. 6 Chaoyangmen Beidajie  
Beijing, 100027, No. China  
Tel: 86-10-85282100 Fax: 86-10-85282104

#### China - Chengdu

Microchip Technology Consulting (Shanghai)  
Co., Ltd., Chengdu Liaison Office  
Rm. 2401, 24th Floor,  
Ming Xing Financial Tower  
No. 88 TIDU Street  
Chengdu 610016, China  
Tel: 86-28-6766200 Fax: 86-28-6766599

#### China - Fuzhou

Microchip Technology Consulting (Shanghai)  
Co., Ltd., Fuzhou Liaison Office  
Unit 28F, World Trade Plaza  
No. 71 Wusi Road  
Fuzhou 350001, China  
Tel: 86-591-7503506 Fax: 86-591-7503521

#### China - Shanghai

Microchip Technology Consulting (Shanghai)  
Co., Ltd.  
Room 701, Bldg. B  
Far East International Plaza  
No. 317 Xian Xia Road  
Shanghai, 200051  
Tel: 86-21-6275-5700 Fax: 86-21-6275-5060

#### China - Shenzhen

Microchip Technology Consulting (Shanghai)  
Co., Ltd., Shenzhen Liaison Office  
Rm. 1315, 13/F, Shenzhen Kerry Centre,  
Renminnan Lu  
Shenzhen 518001, China  
Tel: 86-755-2350361 Fax: 86-755-2366086

#### Hong Kong

Microchip Technology Hongkong Ltd.  
Unit 901-6, Tower 2, Metroplaza  
223 Hing Fong Road  
Kwai Fong, N.T., Hong Kong  
Tel: 852-2401-1200 Fax: 852-2401-3431

#### India

Microchip Technology Inc.  
India Liaison Office  
Divyasree Chambers  
1 Floor, Wing A (A3/A4)  
No. 11, O'Shaugnessey Road  
Bangalore, 560 025, India  
Tel: 91-80-2290061 Fax: 91-80-2290062

### Japan

Microchip Technology Japan K.K.  
Benex S-1 6F  
3-18-20, Shinyokohama  
Kohoku-Ku, Yokohama-shi  
Kanagawa, 222-0033, Japan  
Tel: 81-45-471-6166 Fax: 81-45-471-6122

### Korea

Microchip Technology Korea  
168-1, Youngbo Bldg. 3 Floor  
Samsung-Dong, Kangnam-Ku  
Seoul, Korea 135-882  
Tel: 82-2-554-7200 Fax: 82-2-558-5934

### Singapore

Microchip Technology Singapore Pte Ltd.  
200 Middle Road  
#07-02 Prime Centre  
Singapore, 188980  
Tel: 65-6334-8870 Fax: 65-6334-8850

### Taiwan

Microchip Technology Taiwan  
11F-3, No. 207  
Tung Hua North Road  
Taipei, 105, Taiwan  
Tel: 886-2-2717-7175 Fax: 886-2-2545-0139

### EUROPE

#### Denmark

Microchip Technology Nordic ApS  
Regus Business Centre  
Lautrup høj 1-3  
Ballerup DK-2750 Denmark  
Tel: 45 4420 9895 Fax: 45 4420 9910

#### France

Microchip Technology SARL  
Parc d'Activite du Moulin de Massy  
43 Rue du Saule Trapu  
Batiment A - 1er Etage  
91300 Massy, France  
Tel: 33-1-69-53-63-20 Fax: 33-1-69-30-90-79

#### Germany

Microchip Technology GmbH  
Gustav-Heinemann Ring 125  
D-81739 Munich, Germany  
Tel: 49-89-627-144 0 Fax: 49-89-627-144-44

#### Italy

Microchip Technology SRL  
Centro Direzionale Colleoni  
Palazzo Taurus 1 V. Le Colleoni 1  
20041 Agrate Brianza  
Milan, Italy  
Tel: 39-039-65791-1 Fax: 39-039-6899883

#### United Kingdom

Arizona Microchip Technology Ltd.  
505 Eskdale Road  
Winnersh Triangle  
Wokingham  
Berkshire, England RG41 5TU  
Tel: 44 118 921 5869 Fax: 44-118 921-5820

03/01/02